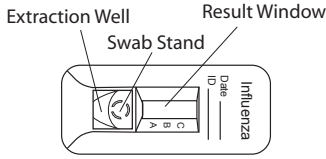


Status Flu A & B

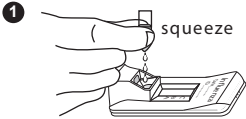
Nasal Swab/Nasopharyngeal Swab

P-52719-B

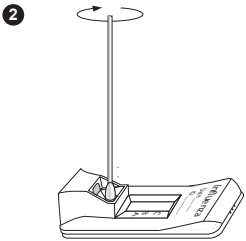
TEST DEVICE



PROCEDURE

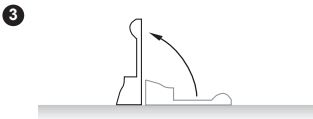


Tear the tab off the Extraction Reagent Capsule and dispense entire contents into the Extraction Well.



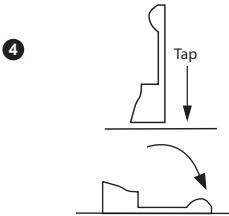
Insert the specimen swab in the Swab Stand.

- **Spin** swab 3 times to mix the specimen.
- **Let stand** 1 minute.
- **Spin** swab 3 times again.



Discard the swab.

Raise the device upright and **let stand** 1–2 seconds.



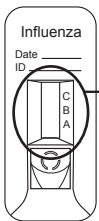
Gently **tap** device to ensure the liquid flows into the hole.

Then, lay the device back down.

Set a timer for 15 minutes.

- 5 Read test results at 10–15 minutes. Confirm negative results at 15 minutes. Do not read after 15 minutes.

INTERPRETATION OF RESULTS



A reddish purple A and/or B Line(s) with C Line is positive.

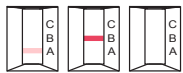


A line: Influenza type A
B line: Influenza type B
A & B lines: Influenza type A & B*

C Line only
Negative (-)



No C Line
Invalid



Repeat with new sample and device.

*Repeatable influenza A and B “dual positive” results should be confirmed by cell culture or PCR testing before reporting results.