

Instructions For Use

Spectra S1 Plus / S2 Plus

PLEASE READ ALL INSTRUCTIONS BEFORE USING THIS

PRODUCT MODEL #: _____

SERIAL#: _____



Single Pumping



Dual Pumping

DO NOT THROW AWAY THIS MANUAL.
PLEASE KEEP IT FOR FUTURE REFERENCE.

Spectra S1 Plus / S2 Plus Breast Pump Instructions for Use

TABLE OF CONTENTS

1. Important Safeguards.....	page 3
2. Important Symbols.....	page 4
3. Indications for Use.....	page 4
4. Components and Assembly.....	page 4
5. Connecting the Tubing to the Pump.....	page 5
6. Pumping Guide.....	page 6
7. Getting Started.....	page 6
8. LCD Display.....	page 8
9. Button Controls.....	page 8
10. Cleaning and Disinfection.....	page 8
11. How long can I store breast milk?	page 9
12. How do I thaw and use stored breast milk?	page 9
13. Battery Information (for Spectra S1 Plus Only)	page 9
14. Night Light.....	page 9
15. Troubleshooting.....	page 10
16. Use and Storage Conditions.....	page 10
17. Technical Specifications.....	page 11
18. Warranty.....	page 11
19. Electromagnetic Compatibility (EMC)	page 11

Spectra S1 Plus / S2 Plus Breast Pump Instructions for Use

INTENDED USE

The Spectra S1 Plus and Spectra S2 Plus are powered breast pumps to be used by lactating women to express and collect milk from their breasts.

1. IMPORTANT SAFEGUARDS

This breast pump is designed to be a single user product. Use of this breast pump by anyone other than the original owner presents health risks, affects performance integrity and voids the product warranty.

- ① If you are a mother who is infected with Hepatitis B, Hepatitis C or Human Immunodeficiency Virus (HIV), pumping breast milk will not reduce or remove the risk of transmitting the virus to your baby through your breast milk.
- ② Before each use, visually inspect the individual components for cracks, chips, tears, discoloration or deterioration. If damage to any of the individual components is observed, discontinue use of the pump and contact the manufacturer or distributor for replacement parts.



READ THIS ENTIRE MANUAL BEFORE USING.

When using electrical products, basic safety precautions should always be followed.



TO REDUCE THE RISK OF ELECTROCUTION:

- ① Do not use while bathing.
- ② Do not place or store product where it can fall or be pulled.
- ③ Do not place or drop into water or other liquids.
- ④ Do not reach for a product that has fallen into water or other liquids; unplug the product immediately.
- ⑤ Do not sanitize the kit in microwave; never immerse main body in water







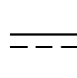
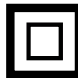



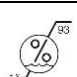
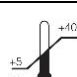
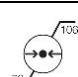
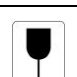

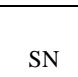






TO REDUCE THE RISK OF BURNS, ELECTROCUTION, FIRE, OR INJURY TO PERSONS:

- ① This product should never be left unattended when plugged into an electrical outlet.
- ② Do not leave this product unattended around infants or children.
- ③ Use this product only for its intended use as described in this manual; do not use any accessories or attachments not expressly manufactured by Uzinmedicare for the Spectra S1 Plus / Spectra S2 Plus breast pump.
- ④ Never operate this product if it has a damaged cord or plug, if it is not working properly, if it has been dropped, damaged or dropped into water, or if any parts are broken or missing.
- ⑤ Keep the cord away from heated surfaces.
- ⑥ Never use the pump while driving, sleeping or drowsy.
- ⑦ Do not use outdoors or operate in environments where aerosol spray products are being used or where oxygen is being administered.
- ⑧ Do not disassemble or modify the product.
- ⑨ Do not use adjacent to or stacked on other electrical equipment.
- ⑩ Allergic reactions may occur.
- ⑪ Lint, dust, light (including sunlight), etc. can adversely affect the safety and performance of this product.
- ⑫ When not in use, unplug the power cord from the electrical outlet.

NOTE: If you feel pain in your breast or nipple, turn the pump off, pull the adapter plug out and remove the breast shield from your breast (the suction can be broken by shutting the pump off and inserting your fingers between your breast and the breast shield). Consult a healthcare professional or lactation advisor, if necessary.

Spectra S1 Plus / S2 Plus Breast Pump Instructions for Use

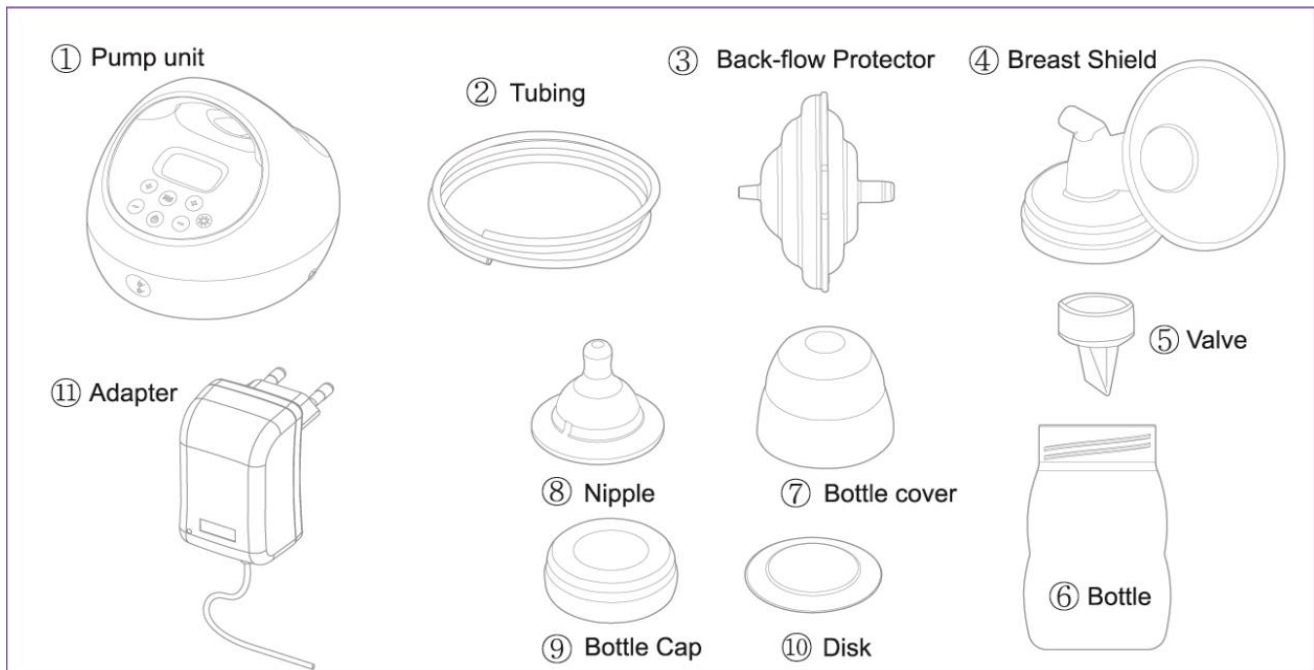
2. Important Symbols

	General Action sign		Danger, Warning		General prohibition sign
	Type BF		DC		Class II
	Power On / Off		European representative		Manufacturer
	Transport/Storage/ Operation Humidity		Operation temperature.		Operation atmospheric pressure
	Fragile		Keep dry		Serial Number
	Date of manufacture		This product should not be mixed with other commercial wastes for disposal.		Do not pile
	Quality management System		Quality System		CE certificate logo

3. Indications for Use

The Spectra S1 Plus / S2 Plus is a powered, breast pump to be used by lactating women to express and collect milk from their breasts. The Spectra S1 Plus / S2 Plus is intended for a single user.

4. Components and Assembly

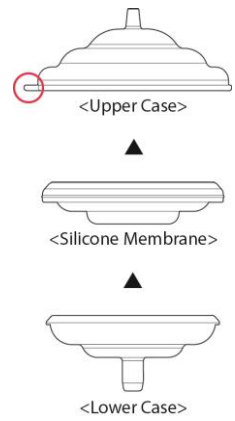
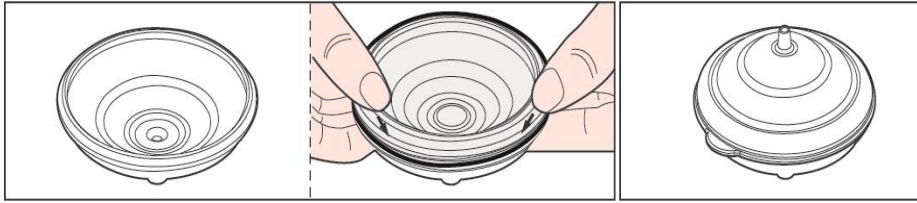


Before using the breast pump for the first time, sanitize the breast shield in boiling water for 5 minutes.

NOTE: Do not boil for more than 5 minutes, as breast shield may become distorted.

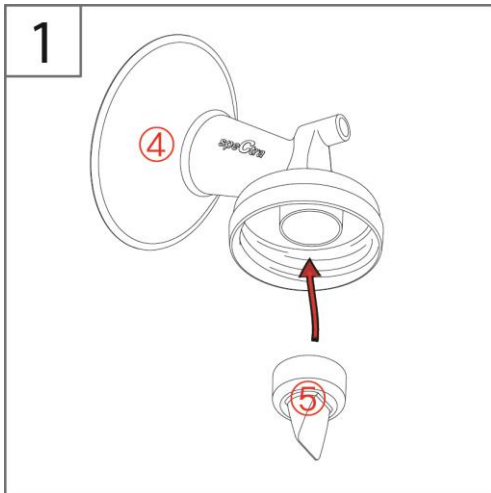
Spectra S1 Plus / S2 Plus Breast Pump Instructions for Use

How to Assemble the Back-Flow Protector:

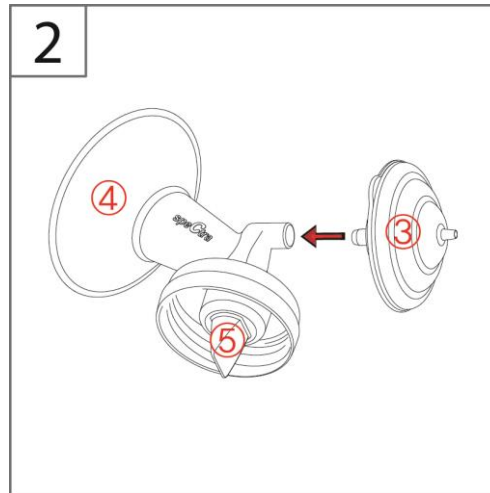


- (1) Insert the white silicone membrane into the lower case.
- (2) Insert the upper case into assembled silicone membrane.

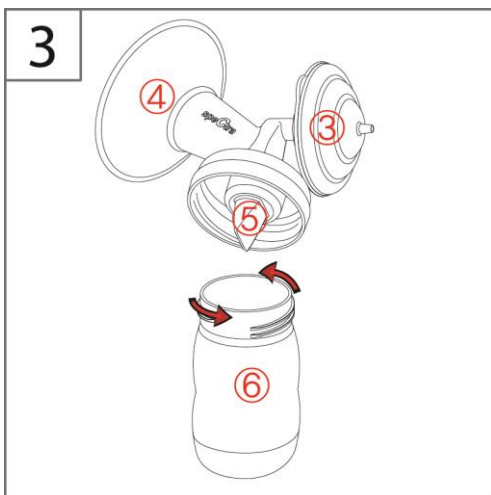
How to Assemble the Pump Kit:



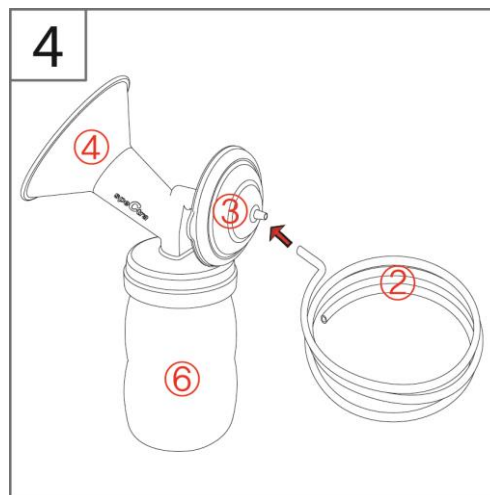
Push ⑤ valve into ④ breast shield



Insert ③ back-flow protector into ④ breast shield



Fasten the ⑥ bottle onto ④ the breast shield



Insert ② tubing into ③ back-flow protector

Spectra S1 Plus / S2 Plus Breast Pump Instructions for Use

5. Connecting the Tubing to the Pump



Locate the vacuum nozzle



Remove the air cap



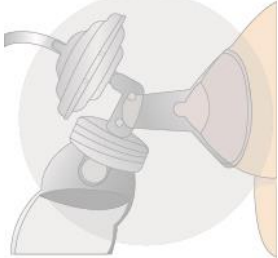




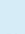
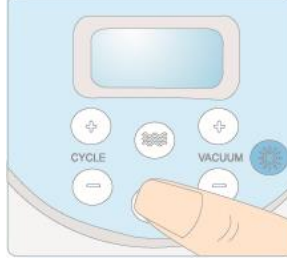

Connect tube(s) to nozzle(s)

6. Pumping Guide

- 1) Relax your body.
- 2) Stimulate your let-down reflex before pumping. Some women have found that gently massaging their breasts or applying warm compresses from the back of the breast toward the nipple can stimulate their let-down reflex.
- 3) Express milk from each breast for 10-15 minutes.

NOTE: For optimal milk expression, we recommend that you pump frequently but in short intervals. (10-15 minutes per breast, every 2-3 hours, 7-8 times a day).

7. Getting Started

 <p>1. Center the breast shield on your breast so that the nipple is drawn into the flange.</p>	 <p>2. Press the power button. The screen will illuminate.</p>	 <p>3. Press the Massage/Expression button to change to expression mode once your milk starts flowing</p>
 <p>4. Adjust the vacuum to a comfortable level using vacuum buttons:   (but never at a level that causes discomfort)</p>	 <p>5. When you wish to stop expressing, press the power button. Next, remove the milk collection kit from your breast.</p>	 <p>6. Disconnect the backflow protector from the breast shield. Remove the breast shield from the milk collection bottle and close the bottle tightly with bottle lid and store safely.</p>

NOTE: The Spectra S1 Plus and Spectra S2 Plus are designed to turn off automatically after 30 minutes and remember your current settings for your next pumping session. If you want to start pumping on settings different from those used during your previous session, adjust the settings before you start expressing.

Spectra S1 Plus / S2 Plus Breast Pump Instructions for Use



Single Pumping



Dual Pumping

Even when you are using the breast pump, we encourage you to breastfeed your baby whenever you can.

- **SETTING THE VACUUM LEVEL:** Adjust the vacuum level by pressing the



buttons.

The vacuum level is measured in mmHg on your breast pump and refers to how strongly the pump will ‘suck’. Please be cautious when setting the vacuum level on the Spectra S1 Plus / S2 Plus. Some women find that milk expression occurs faster on higher vacuum levels. However, it is important not to set the vacuum level so high that it makes you uncomfortable, as the resulting pain will hinder your milk flow.

We therefore suggest that you start off with the vacuum level on low and then gradually increase the vacuum level to a comfortable level. You may find that the vacuum level that you are comfortable with varies significantly, from day to day, during the day and even during the same expression session.

- **SETTING THE CYCLE SPEED:** Adjust the cycle speed by pressing the



button.

The cycle speed is measured in CPM (cycles per minute) on your breast pump and refers to how many times the pump ‘sucks’ and releases per minute. Your Spectra S1 Plus/S2 Plus has been designed with variable cycle settings so that you can find the setting that suits your body best.

Changing the cycle speed can make a dramatic difference in milk expression for some women.

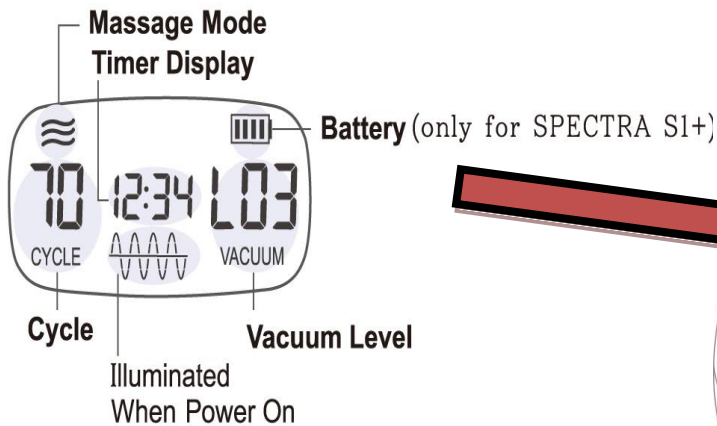
Every woman is different, so adjust the cycle speed setting to find the speed that works best for you.

● **MESSAGE AND EXPRESSION MODES**

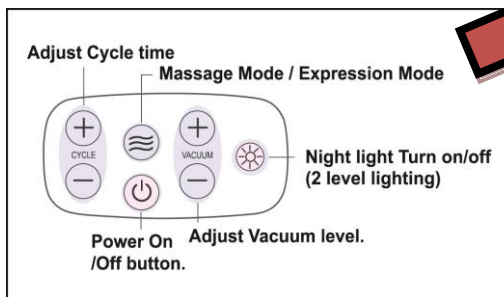
- **Massage Mode:** You will adjust the vacuum level in massage mode to find what works best for you.
- **Expression Mode:** After letdown begins, and once the milk is flowing, your baby will start sucking more slowly and deeply, creating a stronger suction to draw down the milk. This mode has a slower cycle speed and higher vacuum level. Please adjust the cycle speed and vacuum level in expression mode to find what works best for you.

Spectra S1 Plus / S2 Plus Breast Pump Instructions for Use

8. LCD Display



9. Button Controls



10. Cleaning and Disinfection

1) First Time Use

Before using the Spectra S1 Plus or S2 Plus breast pump for the first time, disassemble and wash in warm, soapy water all parts that come into contact with the breast and breastmilk.

2) After Every Use

- ① Disassemble and wash all parts of your pump kit that come into contact with the breast and breastmilk (breast shield kit, valve head, membrane nipple, nipple cover, disk and cap) in warm water with mild soap. All parts in the pump kit are dishwasher safe.
- ② Rinse in clean water and air-dry.
- ③ When parts are completely dry, cover until next use.

NOTE: TO PREVENT CONDENSATION FROM COLLECTING IN THE AIR TUBE, WASH AND DRY IT IMMEDIATELY. IF CONDENSATION REMAINS IN THE AIR TUBE, REPLACE THE TUBING. TO CLEAN THE MAIN BODY, WE RECOMMEND WIPING WITH A CLEAN, DAMP (NOT WET) CLOTH (NO SOAP).

Spectra S1 Plus / S2 Plus Breast Pump Instructions for Use

11. How long can I store breast milk?

At Room Temperature:

Temperature	Storage Time
15°C (60°F)	24 hours
26°C (79°F)	4 to 6 hours
30°C (86°F)	4 hours

In the Refrigerator:

Temperature	Storage Time
0°C - 4°C (32°F - 39°F)	Up to 8 days

In the Freezer:

Type of Freezer	Description	Storage Time
Compartmentalized	part of a refrigerator	Up to 2 weeks
Self-Contained	bottom, top mount, side-by-side or stand alone freezer	3 to 4 months
Deep	constant -17°C (0°F) temperature	6 to 12 months

Source: Breastfeeding Made Easier at Home and Work. womenshealth.gov¹

12. How do I thaw and use stored breast milk?

- Always make sure to check the date on the milk's container before using. Do not use undated milk or milk that has been stored too long.
- Thaw frozen milk in the refrigerator or under cool, running water.
- Heat the milk under warm, running water and gently swirl the container to mix the milk.
- If warm water is not available, heat a pan of water on the stove. Once the water is warm (not boiling) remove the pan from the stove and place the milk container in the pan. Never warm the milk container directly on the stove.
- Never microwave breast milk because microwaves can cause dangerous hot spots that could burn you or a baby.
- Always test the temperature of the milk on the inside of your wrist before feeding it to a baby. The milk should feel warm, not hot.
- After thawing, milk should be stored in the refrigerator for no more than 24 hours.
- Never refreeze thawed milk. Throw away previously frozen milk that is not used within 24 hours.

13. Battery Information (for Spectra S1 Plus Only)

The battery used in this device may present a risk of fire or chemical burns if not used properly.

Do not disassemble, heat, incinerate or dispose of battery in fire.

Dispose of battery in accordance with local, state and federal regulations.

Rechargeable Battery: 11.1V, 2000mAh, Lithium Ion	
Battery indicator displayed with 4 bars	Operating time remaining: approximately 3 hours
Battery indicator displayed with 1 bar	Operation time remaining: approximately 1 hour
Battery indicator flashing	Operation time remaining: approximately 20 minutes

14. Night Light

The innovative built-in LED light allows you to select between two lighting levels, so you always have a light source available for expressing milk.

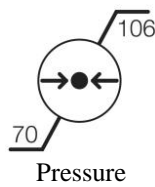
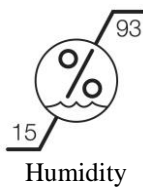
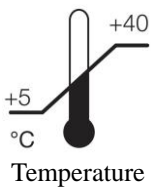
Spectra S1 Plus / S2 Plus Breast Pump Instructions for Use

15. Trouble Shooting

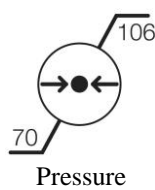
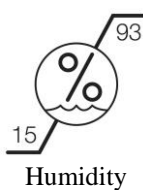
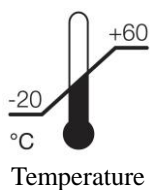
Condition	Possible Causes	Check	Solution
No Power	Adaptor	Is the power cord plugged in? Is the power cord damaged?	Plug into the outlet. If it is damaged, contact the manufacturer or the vendor from whom you purchased the pump.
	Dead battery (Spectra S1 Plus Only)	Is the battery fully charged?	If it doesn't charge, contact the manufacturer or the vendor from whom you purchased the pump.
No Suction	Air tube	Is the tubing connected to the pump?	Connect the air tube to the pump.
	Valve	Are the valve and tube connected to the breast shield properly?	Disassemble and reassemble the parts properly.
	Air cap	Is the air cap closed?	Close the air cap.
Low Suction	Vacuum Level	Is the vacuum level set too low? Is the valve intact? Is the pump making an odd noise?	Contact the manufacturer or seller of the pump.
	Defective assembly	Are kit parts assembled properly?	Disassemble and reassemble the kit parts properly.
	Breast shield	Is the breast shield damaged?	Contact manufacturer to replace the breast shield.
	Valve	Is the valve damaged?	Contact manufacturer to replace the valve.
Pain	Too high suction	Is the cycle speed set too high?	Set to the lowest suction level and see your lactation consultant or health care professional for advice.

16. Use and Storage Conditions

Conditions for Use



Conditions for Storage



Spectra S1 Plus / S2 Plus Breast Pump Instructions for Use

17. Technical Specifications

Protection Type : Class II

Weight : 1.6 kg (approximately 3.5 lbs)

Adapter : Input 100V – 240AC, 50/60Hz, 600mA

Output : 12V, 2A

Battery : 11.1V 2000mAh Li-Polymer

1. Type of protection against electric shock: Class II and/or internally powered equipment
2. Degree of protection against electric shock: Type BF applied parts
3. Classification according to the degree of protection against ingress of water: IPX0, ordinary equipment
4. This equipment is not suitable for use in the presence of flammable anesthetics or oxygen.
5. Mode of operation: Continuous.

18. Warranty

This product is warranted by Uzinmedicare Co., to the original retail purchaser to be free from defects in material and workmanship for a maximum period of two (2) years from the date of purchase. In the event of a defect or failure to conform to this warranty, Uzinmedicare Co. will, at Uzinmedicare Co.'s option, repair or replace this product without charge for such replacement, or parts or labor, at the Uzinmedicare Co. office listed below. The purchaser shall bear all responsibility and expense for returning this product, including risk of loss prior to receipt by Uzinmedicare Co., as well as shipping, packing and insurance costs.

ANY AND ALL IMPLIED WARRANTIES ARE LIMITED TO THE DURATION OF TWO (2) YEARS FROM THE DATE OF PURCHASE. SOME STATES DO NOT ALLOW LIMITATIONS ON HOW LONG AN IMPLIED WARRANTY LASTS, SO THE ABOVE LIMITATIONS MAY NOT APPLY TO YOU.

THE LIABILITY OF UZINMEDICARE CO., FOR BREACH OF ANY WRITTEN OR IMPLIED WARRANTY IS LIMITED TO REPAIR OR REPLACEMENT OF THIS PRODUCT. UZINMEDICARE CO., WILL HAVE NO LIABILITY UNDER ANY CIRCUMSTANCES FOR ANY INCIDENTAL OR CONSEQUENTIAL DAMAGES. SOME STATES DO NOT ALLOW THE EXCLUSION OR LIMITATION OF INCIDENTAL OR CONSEQUENTIAL DAMAGES, SO THE ABOVE LIMITATIONS MAY NOT APPLY TO YOU.

THIS WARRANTY GIVES YOU SPECIFIC LEGAL RIGHTS. YOU MAY ALSO HAVE OTHER RIGHTS WHICH VARY FROM STATE TO STATE.

Uzinmedicare Co. will have no obligation under this warranty to repair any malfunction or damage caused by accident or arising from misuse, abuse, improper maintenance, unauthorized modification, or connection to an improper power supply. Without limiting the generality of the foregoing, bending or dropping of this product or its components and visible cracking of the equipment housing will be presumed to be defects resulting from misuse or abuse. Accessories that are not expressly manufactured by Uzinmedicare Co. and intended for use with the Spectra S1 Plus or Spectra S2 Plus breast pump will immediately void this warranty. A charge will be made for repair or replacement of damaged parts.

If you wish to make a claim under this warranty, you must return this product to Uzinmedicare Co. at the address below, unless directed otherwise by Uzinmedicare Co. Please contact Customer Service at Uzinmedicare Co. and obtain a Return to Merchant Authorization (RMA) Number and reference the number on your return package. The original invoice number or Purchase Order Number must be referenced on the RMA. You must call first for a RMA. Returns will not be accepted without an accompanying RMA.

Uzinmedicare US Customer Service:

Spectra Baby USA

6851 SW 21st Court, Suite 1

Davie, FL 33317

Website : <http://www.spectrababyusa.com>

Email : customerservice@spectrababyusa.com

Telephone : 855-446-6622

Spectra S1 Plus / S2 Plus Breast Pump Instructions for Use

WARRANTY CARD

Please complete the information below and mail the warranty card to the following address:

Spectra Baby USA
6851 SW 21st Court, Suite 1
Davie, FL 33317
Website : <http://www.spectrababyusa.com>
Email : customerservice@spectrababyusa.com
Telephone : 855-446-6622

NOTE: To facilitate processing of your warranty claim, please include proof of purchase from an authorized retailer.

Spectra S1 Plus / S2 Plus Electric Breast pump	
Model No.	
Serial No.	
Name	
Email	
Home Phone	
Mobile Phone	
Street Address	
City and State	
Zip Code	
Country	

19. Electromagnetic Compatibility (EMC)

This equipment needs special precautions regarding Electromagnetic Compatibility (EMC) and needs to be installed and put into service in accordance with the EMC information provided in this Instructions for Use Manual.

Wireless communications equipment such as wireless home network devices, mobile phones, cordless telephones and their base stations, walkie-talkies can affect the Spectra S1 Plus and S2 Plus and should be kept at least 1.0 meter away from the equipment.

This device complies with part 15 of the FCC Rules. Operation is subject to the following two conditions:

- A. This device may not cause harmful interference.
- B. This device must accept any interference received, including interference that may cause undesired operation.

This equipment has been tested and found to comply with the limits for a Class B digital device, pursuant to part 15 of the FCC Rules. These limits are designed to provide reasonable protection against harmful interference in a typical installation. This equipment generates, uses and can radiate radio frequency energy, and if not installed and used in accordance with these instructions, may cause harmful interference to radio communications. However, there is no guarantee that harmful interference will not occur in a particular installation. If this equipment causes harmful interference to radio or television, which can be determined by turning the equipment off and on, the user is encouraged to try to correct the interference using one or more of the following measures:

- Reorient or relocate the receiving device.
- Increase the separation between the equipment.
- Connect the equipment into an outlet on a circuit different from that to which the other device(s) are connected.
- Consult the manufacturer or a field service technician for help.



The Spectra S1 Plus & S2 Plus breast pumps should not be used adjacent to or stacked with other electrical equipment. If adjacent or stacked use is necessary, it is the responsibility of the user to verify that the pump operates normally in such a configuration.

This equipment has no essential performance. It has been tested for immunity to electromagnetic disturbances and passed testing based on certain criteria, such as component failures, changes in programmable parameters or operating mode, cessation or interruption of any intended operation or initiation of any unintended operation.

Spectra S1 Plus / S2 Plus Breast Pump Instructions for Use

TABLE 1: Electromagnetic Emissions (IEC 60601-1-2:2007)

This equipment is intended for use in the electromagnetic environment specified below. It is the responsibility of the user of the Spectra S1 Plus or Spectra S2 Plus breast pump to ensure that it is used in such an environment.


Emission test	Compliance	Electromagnetic environment - Guidance
RF emissions CISPR 11	Group 1	This equipment uses RF energy only for internal function. Its RF emissions thus are very low and are not likely to cause interference with nearby electronic equipment.
RF emissions CISPR 11	Class B	This equipment is suitable for use in all establishments, including domestic establishments and those directly connected to public low-voltage power supply networks that supply buildings used for domestic purposes.
Harmonic emissions IEC 61000-3-2	Class A	
Voltage fluctuations / Flicker emissions IEC 61000-3-3	Complies	

TABLE 2: Electromagnetic Immunity (IEC 60601-1-2:2007)

This equipment is intended for use in the electromagnetic environment specified below. It is the responsibility of the user of the Spectra S1 Plus or Spectra S2 Plus breast pump to ensure that it is used in such an environment.

Immunity test	IEC 60601 test level	Compliance level	Electromagnetic environment - Guidance
Electrostatic discharge IEC 61000-4-2	± 6 kV contact ± 8 kV air	± 6 kV contact ± 8 kV air	Floors should be wood, concrete or ceramic tile. If floors are covered with synthetic material, the relative humidity should be at least 30%.
Electric fast transient / burst IEC 61000-4-4	± 2 kV for power supply lines ± 1 kV for input/output lines	± 2 kV for power supply lines ± 1 kV for input/output lines	Mains power quality should be typical of a commercial or hospital environment.
Surge IEC 61000-4-5	± 1 kV line(s) to line(s) ± 2 kV line(s) to earth	± 1 kV differential mode ± 2 kV common mode	Mains power quality should be typical of a commercial or hospital environment.
Power frequency and magnetic field IEC 61000-4-8	3 A/m at 50 and 60 Hz	3 A/m at 50 and 60 Hz	Power frequency magnetic fields should be at levels characteristic of a typical location in a typical commercial or hospital environment.
Voltage dips and interruptions IEC 61000-4-11	<5% U_T (>95% dip in U_T) for 0.5 cycle 40% U_T (60% dip in U_T) for 5 cycles 70% U_T (30% dip in U_T) for 25 cycles <5% U_T (>95% dip in U_T) for 5 secs U_T = the a.c. mains voltage before application of the test level.	<5% U_T (>95% dip in U_T) for 0.5 cycle 40% U_T (60% dip in U_T) for 5 cycles 70% U_T (30% dip in U_T) for 25 cycles <5% U_T (>95% dip in U_T) for 5 secs U_T = the a.c. mains voltage before application of the test level.	Mains power quality should be typical of a commercial or hospital environment. During a power outage, the equipment should be powered from a battery or other constant, appropriate power supply.
Conducted RF IEC 61000-4-6	3 Vrms 150 kHz – 80 MHz	3 Vrms 150 kHz – 80 MHz	Portable and mobile RF communications equipment should be used no closer to the Spectra S1 Plus or Spectra S2 Plus breast pump (including cables) than the recommended separation distance (d), based on the following equations: $d = 1.2\sqrt{P}$ for 150 kHz – 80 MHz $d = 1.2\sqrt{P}$ for 80 MHz – 800 MHz $d = 2.3\sqrt{P}$ for 800 MHz – 2.5GHz
Radiated RF IEC 61000-4-3	3 V/m 80 MHz – 2500 MHz	3 V/m 80 MHz – 2500 MHz	

Spectra S1 Plus / S2 Plus Breast Pump Instructions for Use

			<p>P is the maximum output power rating of the transmitter in watts. d is the recommended separation distance in meters.</p> <p>Field strength from fixed RF transmitters, as determined by an electromagnetic site survey,^a should be less than the compliance level in each frequency range.^b</p> <p>Interference may occur in the vicinity of equipment marked with the following symbol.</p> <div style="text-align: center;">  </div>
--	--	--	---

^a Field strengths from fixed transmitters, such as base stations for radio (cellular/cordless) telephones and land mobile radios, amateur radio, AM and FM radio broadcast and TV broadcast cannot be predicted accurately. If you wish to use the equipment in the vicinity of fixed RF transmitters and you are uncertain about the electromagnetic environment, please consider obtaining an electromagnetic site survey. If the measured field strength in the location where the equipment is being used exceeds the applicable RF compliance level above, it is the user's responsibility to verify that the equipment is operating normally. If abnormal performance is observed, additional measures, such as re-orienting or relocating the equipment, may be necessary.

^b Over the frequency range 150 kHz to 80MHz, field strengths should be less than 3 V/m.

TABLE 3: Recommended Separation Distances (IEC 60601-1-2:2007)

This equipment is intended for use in an electromagnetic environment in which radiated RF disturbances are controlled. Observing the recommended separation distances between this equipment and other portable and mobile RF communications equipment (transmitters) can reduce the likelihood of electromagnetic interference.

Rated Maximum Output Power of Transmitter (W)	Separation Distance (m) Based on Frequency of Transmitter		
	150 kHz – 80 MHz $d = 1.2\sqrt{P}$	80 MHz – 800 MHz $d = 1.2\sqrt{P}$	800 MHz – 2.5GHz $d = 2.3\sqrt{P}$
0.01	0.12	0.12	0.23
0.1	0.37	0.37	0.74
1	1.2	1.2	2.3
10	3.7	3.7	7.4
100	12	12	23

For transmitters rated at a maximum output power not listed above, the recommendation separation distance d in meters (m) can be estimated using the equation applicable to the frequency of the transmitter, where P is the maximum output power rating of the transmitter in watts (W) according to the transmitter manufacturer.

NOTE 1: At 80 MHz and 800 MHz, the separation distance for the higher frequency range applies.

NOTE 2: These guidelines may not apply in all situations. Electromagnetic propagation is affected by absorption and reflection from structures, object and people.

Spectra S1 Plus / S2 Plus Breast Pump Instructions for Use

Distributed in the US Exclusively by:

Spectra Baby USA

6851 SW 21st Court, Suite 1

Davie, FL 33317

Website : <http://www.spectrababyusa.com>

Email : customerservice@spectrababyusa.com

Telephone : 855-446-6622