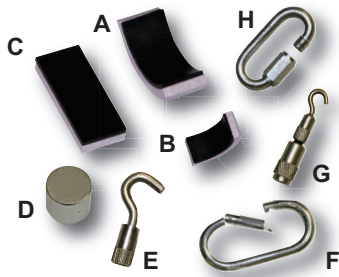


pads and hooks



push attachments

| | | | |
|---|---------|---------------------------|-------|
| A | 12-0371 | padded large curve | 25.00 |
| B | 12-0358 | padded small curve | 50.00 |
| C | 12-0370 | padded straight | 25.00 |
| D | 12-0372 | 1cm ² circular | 12.50 |

pull hooks

| | | | |
|---|---------|-------------|-------|
| E | 12-0377 | medium hook | 12.50 |
| F | 12-0379 | oval snap | 12.50 |

optional pull hook

| | | | |
|---|---------|---------------|-------|
| G | 12-0376 | small hook | 10.00 |
| H | 12-0446 | threaded oval | 7.50 |

7-piece set (1 each)

| | | |
|---------|--------------------------------|-------|
| 12-0470 | 7 piece set (excludes 12-0358) | 97.50 |
|---------|--------------------------------|-------|

lift platforms



- includes base, 5' chain, 1 oval snap, 1 threaded oval
- adjust chain length for test continuity

regular base

| | | | |
|---|---------|-------------|--------|
| I | 12-0406 | (15" x 15") | 125.00 |
|---|---------|-------------|--------|

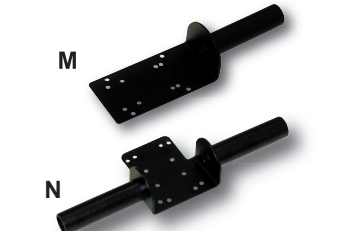
large base

| | | | |
|---|---------|-------------|--------|
| J | 12-0407 | (24" x 24") | 175.00 |
|---|---------|-------------|--------|

accessories

| | | | |
|---------|---------|---------------|------|
| 12-0443 | chain | 2.50 | |
| K | 12-0445 | oval snap | 7.50 |
| L | 12-0446 | threaded oval | 7.50 |

push-pull handles



- fits Baseline[®] hydraulic and electric push-pull and Baseline[®] wrist dynamometer (dual grip only)
- easy to affix and remove
- securely fasten to the backside of devices to facilitate test

push pull handles

| | | | |
|---|---------|-------------|-------|
| M | 12-0385 | single grip | 75.00 |
| N | 12-0389 | dual grip | 75.00 |

pull handle with anchor

- use anchor handle to do pull testing
- | | | |
|---------|-------------|--------|
| 12-0415 | single grip | 100.00 |
| 12-0416 | hardware | 30.00 |

pull cuffs



- securely fasten measurement accessory to subject near muscle group being evaluated
- connect dynamometer to measurement accessory
- cuff with padded foam

| | | | |
|---|---------|------------------|-------|
| O | 12-0420 | ankle | 15.00 |
| P | 12-0422 | thigh | 17.50 |
| Q | 12-0424 | wrist | 12.50 |
| R | 12-0428 | foot stirrup | 15.00 |
| S | 12-0427 | shoulder harness | 30.00 |
| T | 12-0429 | head harness | 25.00 |

back-leg-chest dynamometers



- measure strength of back, leg and chest muscles
- base provides secure footing
- chain length is adjustable to accommodate for height differences or to vary the point of force application
- comes fully assembled with 5' chain
- oversize base 24" x 24"; regular base 18" x 18"
- pointer remains at maximum until reset
- reads lb and kg

| | | | |
|---------|-------------------------------|-----------------|--------|
| 12-0400 | adult with standard base | 660 lb (300 kg) | 550.00 |
| 12-0403 | adult with oversize base | 660 lb (300 kg) | 600.00 |
| 12-0401 | adolescent with standard base | 330 lb (150 kg) | 550.00 |
| 12-0402 | child with standard base | 165 lb (75 kg) | 550.00 |



Baseline[®] cable tensiometer

measure strength of major muscle groups



- secure one cable to a stationary object; the other to the body part using a measurement accessory (see pull cuffs above)
- includes 4 pull cuffs (ankle, thigh, wrist, head) and two 5' chains
- pointer remains at maximum until reset
- reads lb and kg

| | | | |
|---------|------------|-----------------|--------|
| 12-0410 | adult | 660 lb (300 kg) | 525.00 |
| 12-0411 | adolescent | 330 lb (150 kg) | 525.00 |
| 12-0412 | child | 165 lb (75 kg) | 525.00 |