

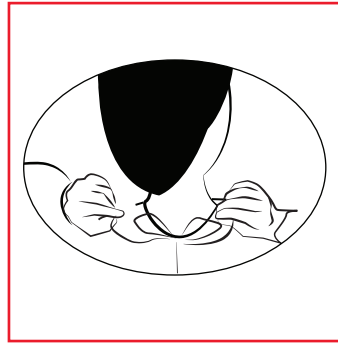
# Instructions for Cardinal Health™ Tie-Neck Gowns:

## How to put gown on:



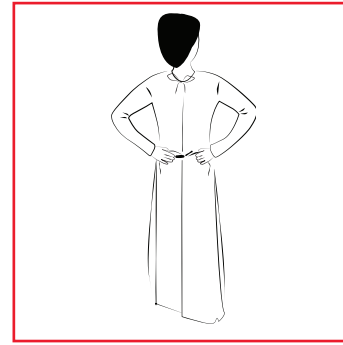
### Step 1:

- Unfold; put arms through sleeves from back of gown
- Straighten out gown



### Step 2:

- Secure neck tie
- \*For styles 3200/3201: Fasten hook and loop neck closure



### Step 3:

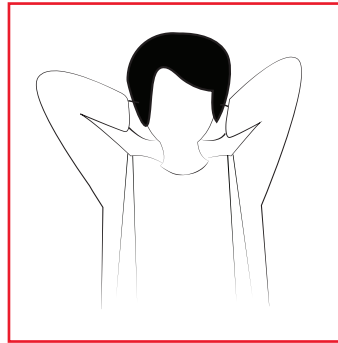
- Reach to the back — find the ties
- Tie the waist ties behind your body
- Gloves go on OVER the wrist cuff/ gown sleeve

## How to take gown off:



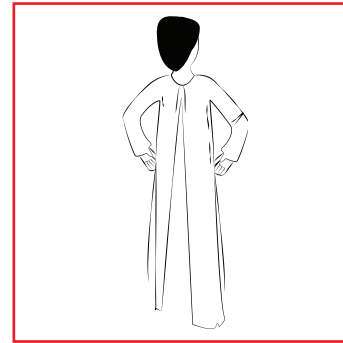
### Warning:

- DO NOT remove by lifting gown over your head



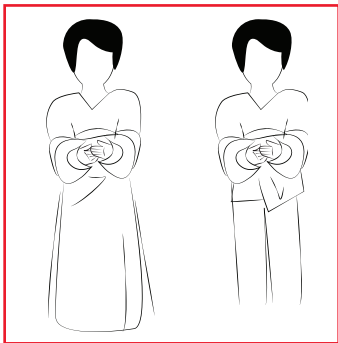
### Step 1:

- Unfasten or tear neck ties



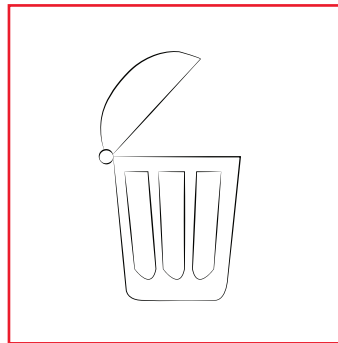
### Step 2:

- Grab the gown and belt on both sides of the waist
- Pull forward; this will cause the ties to break



### Step 3:

- Roll gown into itself, removing your gloves per your facility's protocol



### Step 4:

- Dispose of gown in accordance with your institution's policy

See reverse for ordering information

## Ordering information:

CAT NO.	SIZE/DESCRIPTION	QTY.
<b>Neck tie-bands, elastic wrists, flat pack: Medium weight multi-ply yellow isolation gown</b>		
AT4450-BD	Universal, yellow	10/pk, 100/cs
AT4450-XL	X-large, yellow	10/pk, 100/cs
<b>Neck and waist ties, elastic wrists, flat pack: Basic spunbond polypropylene isolation gown</b>		
1100PG	Universal, yellow	10/pk, 100/cs
1101PG	X-large, yellow	10/pk, 100/cs
1200PG	Universal, yellow	10/pk, 100/cs
<b>Neck and waist ties, elastic wrists, flat pack: Tri-layer SMS fabric isolation gown</b>		
2100PG	X-large, yellow	10/pk, 100/cs
2200PG	Universal, blue	10/pk, 100/cs
2201PG	X-large, blue	10/pk, 100/cs
<b>Neck and waist ties, knit cuffs, flat pack: Full-back poly-coated isolation gown</b>		
7100PG	Universal, yellow	10/pk, 100/cs
7101PG	X-large, yellow	10/pk, 100/cs
7300PG	Universal, white	10/pk, 100/cs
7301PG	X-large, white	10/pk, 100/cs
<b>Neck and waist ties, knit cuffs, flat pack: Chemotherapy gowns</b>		
8200CG	Universal, blue	10/pk, 100/cs
8201CG	X-large, blue	10/pk, 100/cs
<b>Hook-and-loop neck closure, knit cuff, waist belt</b>		
3200PG	Universal, blue	10/pk, 60/cs
3201PG	X-large, blue	10/pk, 60/cs



[cardinalhealth.com](http://cardinalhealth.com)

Cardinal Health  
7000 Cardinal Place  
Dublin, Ohio 43017