

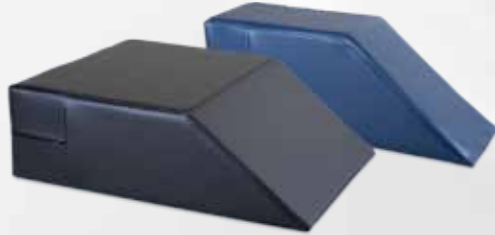
# ACCESSORIES

## ADDITIONAL THERAPY PRODUCTS

### BOLSTERS



AM826: 8" x 12" x 3" Rectangle  
AM827: 8" x 12" x 6" Rectangle



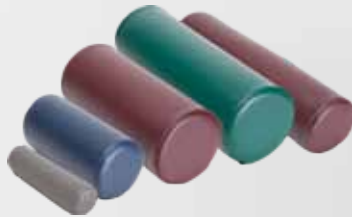
AM829: 19"W x 25"L x 8"H Flat Top Wedge  
AM830: 10"W x 32"L x 12"H Flat Top Wedge



AM831: 20"W x 22"L x 8"H Wedge  
AM832: 24"W x 28"L x 8"H Wedge  
AM833: 20"W x 22"L x 10"H Wedge  
AM834: 22"W x 22"L x 10"H Wedge  
AM835: 24"W x 28"L x 10"H Wedge  
AM836: 24"W x 28"L x 12"H Wedge



AM825: 12" x 12" x 3" Square



AM820: 3" x 12" Cylinder  
AM821: 6" x 12" Cylinder  
AM822: 6" x 24" Cylinder  
AM823: 8" x 18" Cylinder  
AM824: 8" x 24" Cylinder



AM828: 12" x 12" x 3" Pillow

(Note: not all bolsters shown)

### BALANCE BOARDS

AM810: KP Board 18" x 18" (Wobbles approx. 40°)  
AM811: Double KP Board 18" x 36"  
AM812: Oblique Balancer 15 1/2" Square  
AM813: Round Balancer 15"  
250 lb. Weight Capacity



### AM-630 Hand Therapy Table

- 1-Section Hand Therapy Table
- 31"L x 16"W
- Min. Height: 23"
- Max Height: 33"
- Adjustable Height
- Laminated Top
- 200 lb. Capacity





**AM-680 Training Stairs with Bus Step**

Maple plywood base and handrails with natural finish. Three 4" risers on one side and two 6" risers on the other. When the bus step is installed, a 12" riser is created. The platform is 24" x 30".

Handrail Height 36"; Overall Height 48"  
450 lb. Capacity; Footprint: 55" x 31"



**AM-686 Mobile Posture Mirror**

Maple plywood with natural finish  
23" x 70" with 3" heavy duty Caster

Height: 76"  
Width: 26"  
Depth: 18"



**AM-840 Footstool**

All welded steel construction with silver vein powder coating. Stepping surface / platform 10" x 15" with non-skid rubber tread.

Overall size 14"W x 18"L x 10"H  
300 lb. Capacity



**AM-842 Footstool with Handrail**

All welded steel construction with silver vein powder coating. Stepping surface / platform 10" x 15" with non-skid rubber tread.

Overall size 14"W x 18"L x 10"H  
Step with handrail height of 41".  
300 lb. Capacity



**AM-844 Mobile Stool**

All welded steel construction with silver vein powder coating. Seat is 14" x 14" with 2" firm density foam. Height is 18" with 4 swivel casters.

225 lb. Capacity; 2.5" casters

**AM-846 Pneumatic Stool**

Seat is 15" diameter with 3" of Firm Density foam padding. Seat height is adjustable from 17" to 22". Base has 5 legs and is 21" overall width.

300 lb. Capacity



**Other Options and Accessories:**

- 4 Caster Base
- 6" Clearance Base
- Face Plug
- AM-805 Paper Holder with Cutter
- AM-807 Fold Down Side Rails
- Face Cut Out