

BodiLink[®] Accessories

Durable, comfortable, adjustable



permobil



Premium pads uniquely designed to fit and adjust to the user

Head Support

Durability without compromise

With completely reimagined hardware and a variety of pads and cover styles, you will never have to sacrifice the comfort you deserve for the durability you need. Experience precise alignment, greater surface contact, and more stable head positioning with the improved BodILink Head Support.

Expanded hardware selection has improved strength and versatility


Lateral Trunk Supports

Perfectly shaped for comfortable, flexible support

BodiLink Lateral Trunk Supports are designed with your body's shape in mind. The modular design and unique wrist joints make setup and adjustment easy, and our 48 pad options including basic, premium, moldable, and rigid, ensure you will get the exact support you need.



Unique wrist joint on GT2 Hardware allows for pad rotation to match the user



Spring-loaded joints help guide hardware alignment during set-up

Lateral Pelvic/ Thigh Supports

Unmatched compatibility

BodiLink Lateral Pelvic/Thigh Supports are compatible on virtually any power or manual wheelchair. Fixed or removable telescoping taper (TT) or gear teeth (GT) hardware combined with four premium pad and ten zero elevation or anti-thrust basic pad options, make BodiLink a versatile solution for all lateral support needs.

Telescoping taper hardware allows for precise adjustments

One-handed release operation of removable TT Series hardware

HCPCS E0953 / Removable Hardware E1028

Removable TT Hardware Pictured


Medial Knee/ Thigh Supports

Let the accessory do it

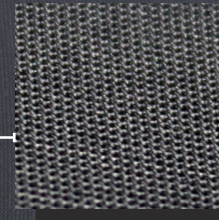
BodiLink Medial Knee/Thigh Supports for manual wheelchairs decrease the need for dramatic positioning elements within a cushion while providing essential support for better alignment and posture. An easy-to-operate, flip-down mechanism allows the support to temporarily swing away under the wheelchair for easy transfers.

Sliding track allows the support pad to be optimally positioned.

HCPCS E0957 / Swing-Away Hardware E1028



Patented 2-ply, low-friction fabric transfers shear forces from the user to the fabric.



with **GlideWear**™ technology

GlideWear® Covers

Premium shear reduction included

Get the positioning and support you need with tissue protection in mind. Experience the benefits of up to 88% reduction in shear forces* by choosing from our variety of exclusive GlideWear cover options.

GlideWear cover options are currently available on:

BodiLink Head Support	Premium Pads Only
BodiLink Lateral Trunk Supports	Premium Pads Only
BodiLink Lateral Pelvic/Thigh Supports	All Support Pads
BodiLink Medial Knee/Thigh Supports	All Support Pads

**Results of modified ISO 16840-2 testing of a foam cushion comparing a typical cover to a GlideWear cover.*

Decisions about how to code a product are the responsibility of the provider/supplier. Since Medicare coding is subject to change, the provider should always confirm the HCPCS code and coverage criteria as part of the client assessment process

The following are trademarks of Permobil: ACTA-EMBRACE®, AGILITY®, BodiLink®, Comfort-Tek®, RADIUS®, and Stretch-Air®.

GlideWear® is a registered trademark of Tamarack Habilitation Technologies, Inc. Quantum® is a registered trademark of Pride Mobility Products Corporation. Quickie® is a registered trademark of Sunrise Medical. ROVI® is a registered trademark of SHOPRIDER Mobility Products, Inc. Avid Rehab™ is a trademark of Merits Health Products.

Head Support hardware options



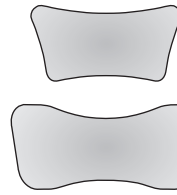
PT Series
(Piano Taper)
5 Styles



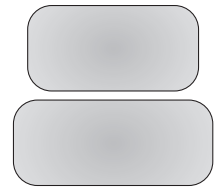
GT Series
(Gear Teeth)
2 Styles

Modular designs offer adjustability and customization so pad placement reaches where needed, without compromise
New flip-down release available on PT hardware

Pad options



Premium
6 Sizes
3 Cover options
2 Firmness levels
Contoured



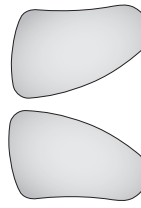
Basic
6 Sizes
2 Cover options
1 Firmness level
Moldable

Lateral Trunk Support hardware options

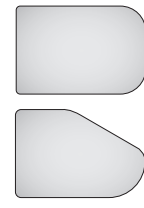


GT2 Series (Gear Teeth)
Mounting options listed below
Modular designs in both swing-away and fixed options
Winter/Summer GT2 mounting hardware available for Acta-Embrace® back support

Pad options



Premium
6 Sizes
6 Covers or no cover
Moldable and rigid styles in supportive and active shapes



Basic
6 Sizes
2 Cover options

Lateral Pelvic/Thigh Support hardware options



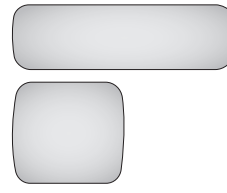
TT Series
(Telescoping Taper)
Power mounting & slot mounting



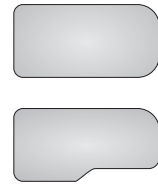
GT Series
(Gear Teeth)
Slot mounting

Each hardware has a removable and fixed option
Release lever position and orientation on removable style hardware is adjustable to fit user and caregiver needs and preferences

Pad options



Premium
4 Sizes
3 Cover options



Basic
10 Sizes
3 Cover options
2 Shapes

Medial Knee/Thigh Support hardware options



TT Series (Telescoping Taper)
Mounts to Comfort Removable Solid Seat Pans on manual wheelchairs
Flip-down release is standard
3 sizes of height-adjustable, telescoping hardware, fits a 1" - 7" range of cushion thicknesses

Pad options



Wedge
3 Sizes
3 Cover options



Oval
3 Sizes
3 Cover options

Hardware Compatibility

	Acta-Series	Permobil®	Quantum®	Quickie®	Rovi®	Avid Rehab™	Other
Head Support	•	• ◊	• ◊	◊	◊	◊	AGILITY®, VISCO & RADIUS® back supports
Lateral Trunk Supports	•	• ◊	• ◊	◊	◊	◊	VISCO & RADIUS back supports, wheelchair canes
Lateral Pelvic/Thigh Supports	n/a	•	•	•	•	•	Manual wheelchairs with solid seats
Medial Knee/Thigh Supports	Mounts on manual wheelchairs only with Comfort Removable Solid Seat Pan						

• = Direct mount ◊ = Indirect mount (attaches to an Acta-Series back support with Compass® Power Mount Hardware)