

## Half-Length Bed Rail

HCPCS: E0305

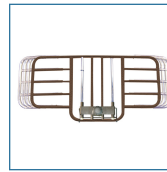
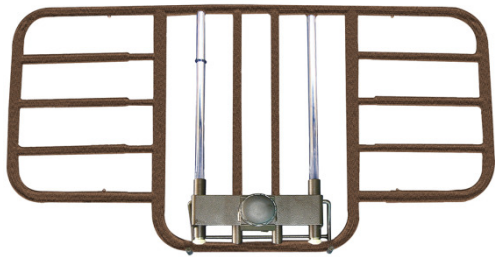


FIGURE A



FIGURE B



FIGURE C

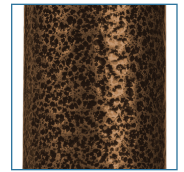


FIGURE D

- Half rail was designed to comply as part of the FDA Hospital Bed System Dimensional and Assessment Guidance to Reduce Entrapment
- Tool-free width adjustment allows the rail to be adjusted in 2" increments from 36" - 42" (Figure A - B)
- Ideal for protection when bed is elevated
- Chrome finish on second and fifth bar allows for scratch-proof movement of adjustment bracket
- Fits most beds with steel frame (Figure C)
- Attractive brown-vein finish is easy to maintain and less institutional looking (Figure D)
- Constructed of 1" steel
- Not for use with "Pan-Style" bed surfaces
- Easy to install

### PRODUCTS

### Description

15208BV	HalfRail,ToolFreeAdjWidth,BrownVein,1/cs
---------	--

### SPECIFICATIONS

### Description

Length Adjustment	36", 38", 40", 42"
Warranty	Limited Lifetime