

Panel Leg Series, Treatment Table with Shelf & Drawers



MODELS: 91013-27 & 91013-30

- All laminate construction
- Sleek panel leg design
- Laminate shelf & two drawers with easy-clean, plastic interiors
- Adjustable backrest with 6 settings of approximately: 27°, 36°, 43°, 50°, 55° & 60°
- Scratch resistant topcoat finish
- Ships flat for easy handling and extra savings
- Fast and easy assembly
- Seamless rounded corner top
- 2" firm foam padding (5 cm)
- Heavyweight, knit-backed upholstery
- 500 lbs. load capacity under normal use (181.43 kg)

SPECIFICATIONS

91013-27	72" L x 27" W x 31" H
91013-30	72" L x 30" W x 31" H



Prop 65 Warning

! **WARNING:** This product can expose you to chemicals, including chromium, which is known to the State of California to cause cancer or reproductive toxicity. For more information go to www.P65Warnings.ca.gov.

Options



034– Paper Dispenser & Cutter Combo



040– Paper Cutter



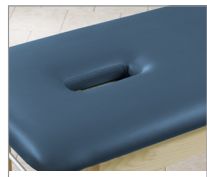
030– Paper Dispenser



088–Flat Top



055– Door & Drawer Locks



009–Nose Hole

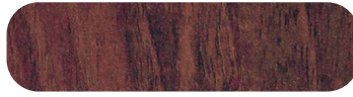
Laminate Colors



Gray



Maple



Dark Cherry

Upholstery Colors



Slate Blue



Wedgewood



Royal Blue



Desert Tan



Burgundy



Country Mist



Warm Gray



Gunmetal



Black